

SII



High Speed, High Quality,
Low Solvent Printers

High Performance Solvent Printers
ColorPainter H2-104s/H2-74s

High Performance Solvent Printers
ColorPainter H2-104s/H2-74s NEW

SPECIFICATIONS

Model	IP-7900-20 (ColorPainter H2-104s)	IP-7900-20 (ColorPainter H2-74s)
Print Head	High-frequency drop on demand piezo	
Number of Nozzles	508 nozzles x 8	
Resolution	360 dpi to 900 dpi	
Maximum Media Width	2.642 mm (104")	1.900 mm (74.8")
Maximum Print Width	2.632 mm (103.6")	1.890 mm (74.4")
Media Weight	Up to 120 kg (264 lbs.)	Up to 50 kg (110 lbs.)
Maximum Media Dia.	350 mm (13.8")	220 mm (8.7")
Margin Size	5 mm on each edge (with rolled media, without edge guards)	
Ink Type	Mild Solvent: EGO-GX	
Color	8 (C, M, Y, K, Lc, Lm, Gray & Light Gray) or 4 (C, M, Y, K) x 2	
Ink Capacity	1.500 ml per colour	
Media	PVC, banner and other media designed for solvent printers	
Heater	3-way built in heaters (Front/Print/Rear); Max temp. 70	
Take-up Modes	Loose/Inner, Loose/Outer, Tension/Inner, Tension/Outer	
Interface	USB 2.0	
Power Voltage	200 to 240 VAC. ± 10%	
Power Consumption	Printer: 1440 W or less, Heater: 2880 W or less	
Operating Environment	15 - 30 (59 - 86 °C), 30 to 70% RH (no condensation)	
Storage Environment	5 - 35 (41 - 95 °F), 10 to 80% RH (no condensation)	
External Dimensions (W) x (D) x (H)	4.126 x 1.366 x 1.513 mm (162" x 54" x 60")	3.383 x 1.275 x 1.511 mm (133" x 50" x 60")
Weight	600 kg (1.322 lbs.) or less	450 kg (992 lbs.) or less
Option	Mesh Printing Kit, Foot Switch, Scroller, Exhaust Attachments, Scroller Set (Shaft & 2 Flanges), Scroller Flange (2pcs/set)	

OPTION

Common option

IP7-013 Exhaust Attachment

Option for ColorPainter H2-104s

IP7-011 Mesh Kit

IP7-014 Foot Switch

IP7-015 Scroller

IP7-023 Tensioner 104

IP7-025 Offset loading kit 104

IP7-109 Filter Kit 104

Option for ColorPainter H2-74s

IP7-017 Mesh Kit 74

IP7-018 Foot Switch

IP7-019 Scroller

IP7-022 Tensioner 74

IP7-024 Offset loading Kit 74

IP7-029 Filter Kit 74

Consumables

IP7-101 EGO-GX Y (Yellow)

IP7-102 EGO-GX M (Magenta)

IP7-103 EGO-GX C (Cyan)

IP7-104 EGO-GX K (Black)

IP7-105 EGO-GX Lc (Light Cyan)

IP7-106 EGO-GX Lm (Light Magenta)

IP7-107 EGO-GX Gy (Gray)

IP7-108 EGO-GX Lgy (Light Gray)



Specifications are subject to change without notice. Please contact your local authorised SIIT product reseller. ColorPainter is trademark of Seiko I Infotech Inc. All other trademarks are the property of their respective owners.

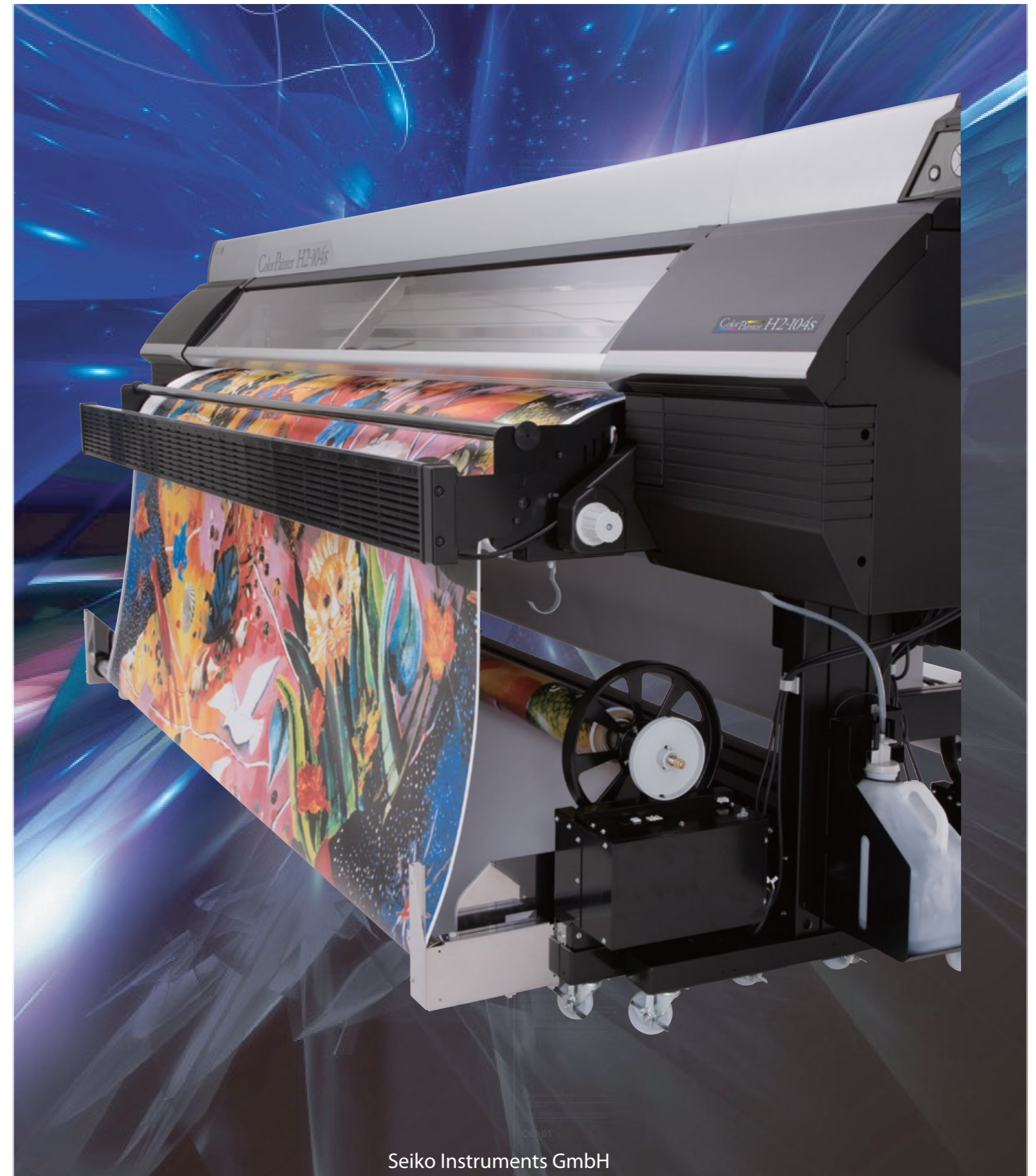
SII



Seiko Instruments GmbH
Siemensstraße 9
D-63263 Neu-Isenburg, Germany
tel: +49 6102-297100
fax: +49 6102-29750100
info@seiko-instruments.de

INFORMATION <http://www.seiko-i.com>

Authorized Reseller

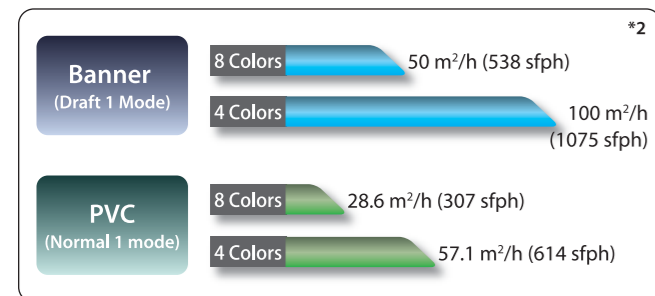


Seiko Instruments GmbH

THE FASTEST PRINTER IN ITS CLASS ^{*1}

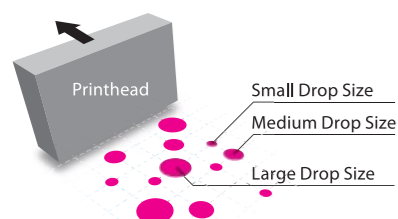
Integrating the Smart Pass Technology 3 with Dynamic Dot Printing Technology, the ColorPainter H2-104s/H2-74s prints revolutionary higher quality image while maintaining the high print speed of its predecessor. The fastest print mode achieves 50 m²/h (538 sqfph) (8-color mode). The printer is best suited for large format banners and high volume printing in short turnaround times.

Speed



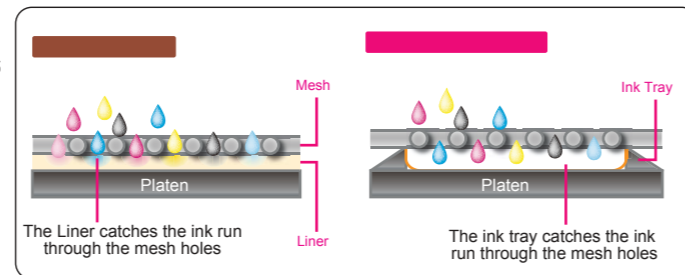
DYNAMIC DOT PRINTING TECHNOLOGY

Dynamically processing 3 different drop sizes to maximize image quality and maintain proper color density, DDP Technology produces outstanding image quality with less graininess even at the highest speed of 50 m²/h (8-color mode) ^{*3}



MESH PRINTING KIT ^{*5}

Optional mesh print ink tray enables printing on mesh banner without liner.



EXPANDED APPLICATION VERSATILITY

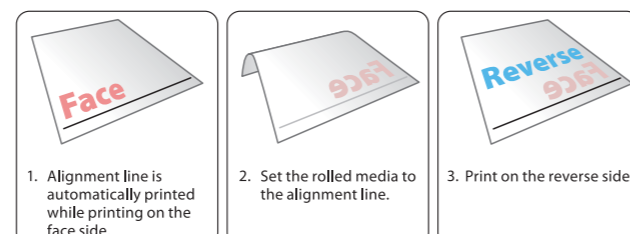
Within the proven high density inks, the ColorPainter H2-104s/H2-74s provides expanded indoor and outdoor application versatility, not to mention the super high speed print on large banners. The printer is capable of printing highly precise indoor graphics, backlit banners, mesh banner without liners, and double sided prints.

^{*} Mesh banner requires optional mesh printing kit.

DOUBLE SIDE PRINTING SUPPORT FUNCTION ^{*6}

Alignment of double sided printing may be affected by media settings and media advance adjustment. Double sided print can't be used with permeable media like flexible face materials.

Please consult with SIIT for details.



MAXIMUM QUALITY MODE SUPPORTS 900 DPI

Achieving 900 dpi at the maximum quality mode, the ColorPainter H2-104s/H2-74s offers unparalleled image quality with less graininess.

Quality

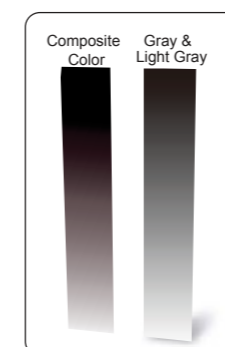


SMART PASS TECHNOLOGY 3

Smart Pass Technology 2 that comes with the ColorPainter H-104s/H-74s has evolved to its next stage. Smart Pass Technology 3 uses the most advanced algorithms and improved mask patterns to reduce overspray and eliminate pass-to-pass banding.

GRAY AND LIGHT GRAY INK

With Gray and Light Gray inks, the ColorPainter H2-104s/H2-74s is capable of expressing real gradation, light shadows and metallic texture which cannot be achievable with composite colours.



SMART NOZZLE MAPPING ^{*4}

The innovative nozzle compensation function re-maps clogged nozzles so you can continue to print with perfect image quality. This unique technology works with no speed loss unlike the other nozzle compensation systems. Smart Nozzle Mapping can significantly reduce downtime and increase your productivity.



Reliability

CP_MANAGER CP_MANAGER

CP_Manager software allows you to monitor printer status, change print settings, check ink levels, or see suggested maintenance on your PC. Operation and troubleshooting guides are also available through CP_Manager. Its intuitive interface makes printer control easy even for a first-time user of ColorPainter H2-104s/H2-74s.



Screenshot of CP_Manager for ColorPainter W-64s/W-54s.



LARGE CAPACITY INK BAGS

The ColorPainter H2-104s/H2-74s utilizes efficient 1.5 litre ink bags, which not only reduces the necessity for frequent ink replacement but also minimise environmental waste.

SUBCARTRIDGE

Subcartridges allow you to replace ink on the fly without interrupting print jobs. Inks in the subcartridges will not be wasted in the switching operation between the two color modes, 4-color mode for productivity-oriented jobs and cost-sensitive jobs and 8-color mode for image quality-oriented jobs. This reduces the amount of waste ink to a minimum at the time of switching modes.



^{*1} Among solvent inkjet printers that cost less than 10 million JPY as of Sep. 2011; ^{*2} Print speed of ColorPainter H2-104s with Smart Pass Technology to Low on 2642 mm wide media; ^{*3} Print speed of the ColorPainter H2-104s; ^{*4} This function does not guarantee image quality improvement under any print conditions. In case this function does not work effectively, print head replacement or other measures may be necessary; ^{*5} Expected image quality is not guaranteed due to the slight individual difference among the printers and media. Be sure to perform test print beforehand. SIIT does not guarantee all mesh banners are printable with the printer; ^{*6} Alignment of double-sided printing may be affected by media settings and media advance adjustment. Double-sided print can't be used for permeable media like flexible face materials. Please consult with SIIT for details.